



OPTIONAL ECLIPSE FACADE

# ELWOOD 173 MKI

10M+

4  2  1 



OPTIONAL AURORA FACADE



OPTIONAL NOVA FACADE



OPTIONAL SOLSTICE FACADE



OPTIONAL ZENITH FACADE

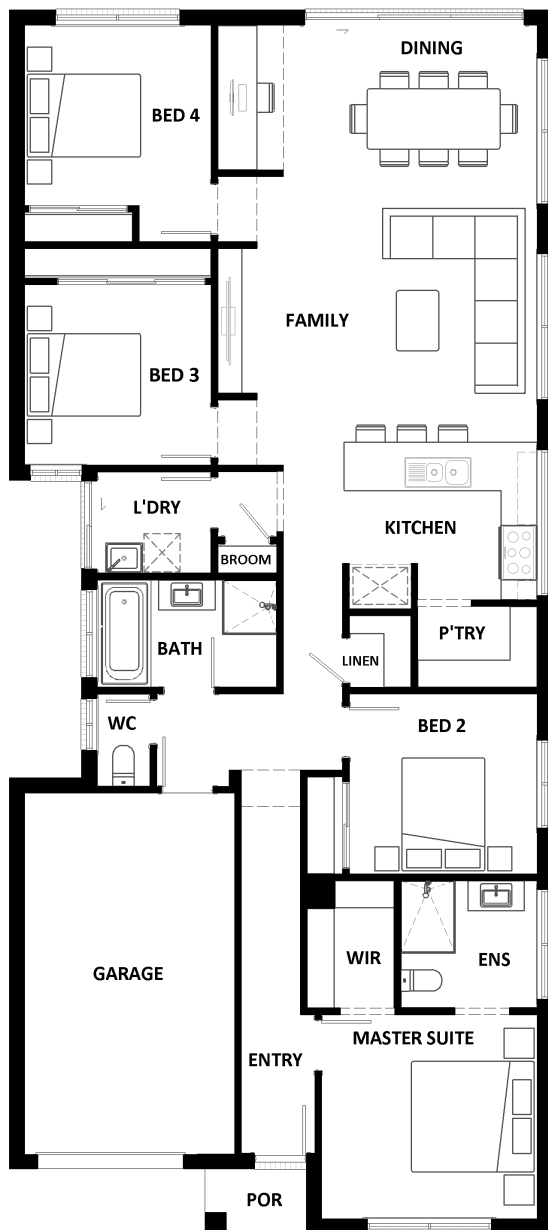
HOTONDO HOMES  
**FOREVER  
 SANCTUARY**  
*• Forever part of the family •*

 **Hotondo Homes**  
 1800 677 156 | [hotondo.com.au](http://hotondo.com.au)

# ELWOOD 173 MKI

Featuring three bedrooms divided between the front and rear of the home, two bathrooms and a single garage, the Elwood 173 offers nothing but the best in contemporary home design. The master suite boasts a large walk-in-robe and ensuite, while the remaining bedrooms are complete with built-in robes. The kitchen overlooks the family and dining area, which is zoned together to create an open and comforting environment. This design is available in an alternative layout, and a smaller 156 and a larger 197 size.

**LOT WIDTH: 10M+**



## HOME AREAS (m<sup>2</sup>)

Residence	147.41
Garage	23.59
Porch	1.81
Total	172.81
Total (sq's)	18.60

## OVERALL DIMENSIONS (m)

Width	8.99
Length	20.27

## ROOM DIMENSIONS (m) width x length

Master Suite	3.59 x 3.40
Bedroom 2	3.13 x 3.00
Bedroom 3	3.11 x 3.01
Bedroom 4	3.11 x 3.01
Family	5.31 x 4.10
Dining	4.22 x 3.00
Garage	3.50 x 6.00